

LEASEHOLD



Apartment - First Floor (EPC Rating: B)

**FLAT 5A FENTON COURT, BURGESS SPRINGS,
CHELMSFORD, ESSEX, CM1 1HW**

£225,000



First Step



1



1



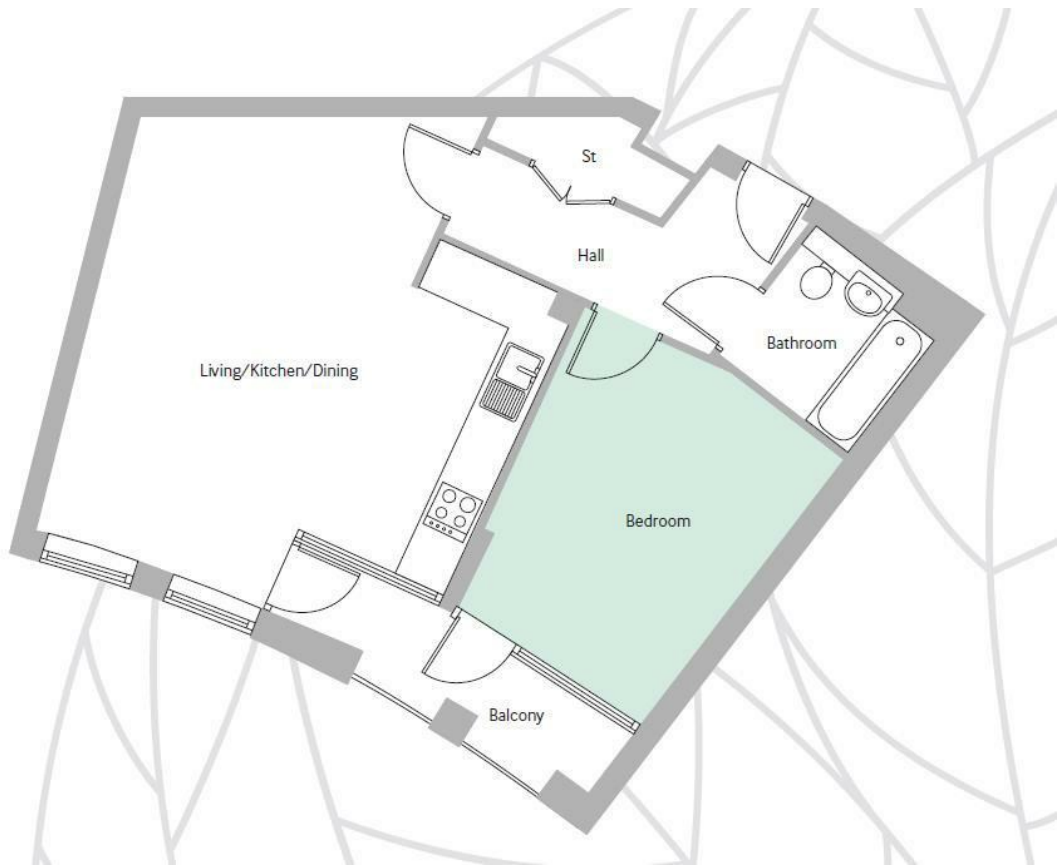
1



B

1 Bedroom Apartment - First Floor located in Chelmsford

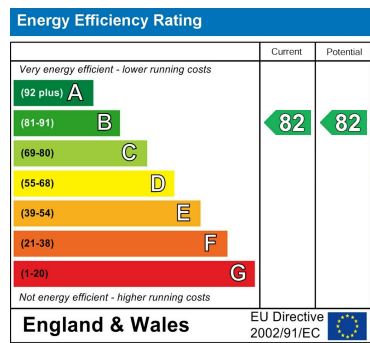
**** IDEAL FIRST PURCHASE**** SPACIOUS and MODERN 1 bedroom first floor apartment. Fitted to a HIGH SPECIFICATION. ALLOCATED parking space. Private BALCONY. Opposite Chelmsford TRAIN STATION.



Council Tax Band

C

Energy Performance Graph



Call us on

01462 659 730

sales@firststep.ltd

www.firststep.ltd

Agents Note: Whilst every care has been taken to prepare these particulars, they are for guidance purposes only. All measurements are approximate and are for general guidance purposes only and whilst every care has been taken to ensure their accuracy, they should not be relied upon and potential buyers are advised to recheck the measurements.



First Step